






Description

Thermostat with backlite display for various HVAC applications.

Stylish designed with user friendly LCD display and silicon rubber buttons interface universal room Thermostat, 6 D/O, 2 A/O and 2 U/I., 24VAC (available also as line voltage model with Flush mount plastic housing) for both fan coil and air condition control, suited for commercial and residential applications

Up to: 2 cooling stages, 4 heating stages, 3 fan speeds or VFS

Optional configuration

Humidity 	Occupancy sensor 	Programmable 
<ul style="list-style-type: none"> ▪ Built in Humidity sensor (option) ▪ Humidity set-point controls ▪ Humidifier/de-humidifier outputs ▪ Cool + re-Heat de-humidification option 	<ul style="list-style-type: none"> ▪ Built-in OCC PIR sensor ▪ Integration with Energy Saving algorithms and door switch/key input ▪ 5 m. / 15 ft. detection 	<ul style="list-style-type: none"> ▪ Daily/Weekly programs: <ul style="list-style-type: none"> 1 for all, 5-1-1, 5-2 or 7 days ▪ 2 or 4 Daily events ▪ Program type: "EU" - Start time and Stop time or "US" - Start time, set-point, mode and speed.

ALT Thermostat Series | General Datasheet

Features & Benefits

- Clear icons on LCD for all the operation functions
- Simple and easy functional pressed silicon rubber buttons
- Easy configuration with DIP Switches and technician settings procedure
- Full access to all the thermostat parameters from the technician settings menu
- Temperature readings from the thermostat or from an External sensor
- I/O list:
 - 6 D/O - Maximum 3A each, 5A total
 - 2 A/O - 0-10V
 - 2 U/I - D/I or 0-10V input
- Backlit display with adjustable dimming time
- Optional External Temperature sensor
- Optional Buttons Lock
- °F/°C scale
- Ambient Temperature display & reading offset
- Occupancy sensor input – for energy saving
- Economy Mode
- Filter clean/replace alert with adjustable time
- Freeze Protection – adjustable temperatures
- Auto Fan (fan on demand)
- Compressor protection delay timer
- H/P and H/C heating configurations

Comparison Table

Models	Humidity sensor	PIR (Occupancy sensor)	Programmable	Available in line voltage
ALT24/SUPER				√
ALT24/SUPER/PROG			√	√
ALT24/SUPER/HU	√			√
ALT24/SUPER/PROG/HU	√		√	√
ALT24/SUPER/HU/PIR	√	√		√
ALT24/SUPER/PROG/HU/PIR	√	√	√	√

*Note: Not all options available in all models

All ALT models control Heat/Cool, A/C, Rooftops, PTACs systems and Fan Coils 2-pipe or 4-pipe systems with On/Off and Proportional valves and offer 3 speeds or VFS fan control

ALT Thermostat Series | General Datasheet

Naming conventions

24VAC	/24 after the P/N indicates that the thermostat is a 24VAC operated model. No /24 indication means line voltage thermostat with flush mount design.
Programmable	/PROG after the P/N includes Real time clock and Weekly-Program (Scheduling).
Humidity	/HU after the P/N Includes built in Humidity sensor .
PIR (Occupancy sensor):	/PIR after the P/N includes built-in PIR Occupancy sensor.

Wiring diagrams

ALT24 24VAC

11-14, *15-16 D/O options:

- Fans
- Compressors
- Heat pump
- Electric heating
- Floor heating
- Chilled beams

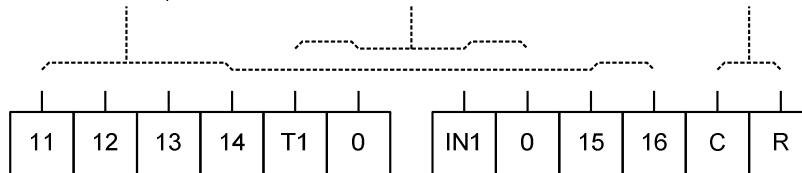
*15-16 A/O options:

- Proportional valves
- VFS (ECM motor)
- Humidifier/Dehumidifier
- Fresh air damper

T1-0, IN1-0 - U/I options:

- Return air temperature sensor
- Auto change-over sensor
- Deicing temperature sensor
- Remote On/Off switch
- External occupancy sensor
- Door switch
- Keycard
- Economizer sensor

Main Supply
24VAC, 50~60Hz



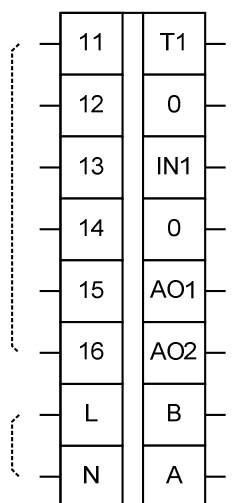
*Outputs 15 and 16 can be used as D/O or A/O outputs – jumper selectable

ALT 110~230VAC (Line voltage)

D/O options:

- Fans
- Compressors
- Heat pump
- Electric heating
- Floor heating
- Chilled beams

Main Supply
110~230VAC, 50~60Hz



U/I options:

- Return air temperature sensor
- Auto change-over sensor
- Deicing temperature sensor
- Remote On/Off switch
- External occupancy sensor
- Door switch
- Keycard
- Economizer sensor

A/O options:

- Proportional valves
- VFS (ECM motor)
- Humidifier/Dehumidifier
- Fresh air damper

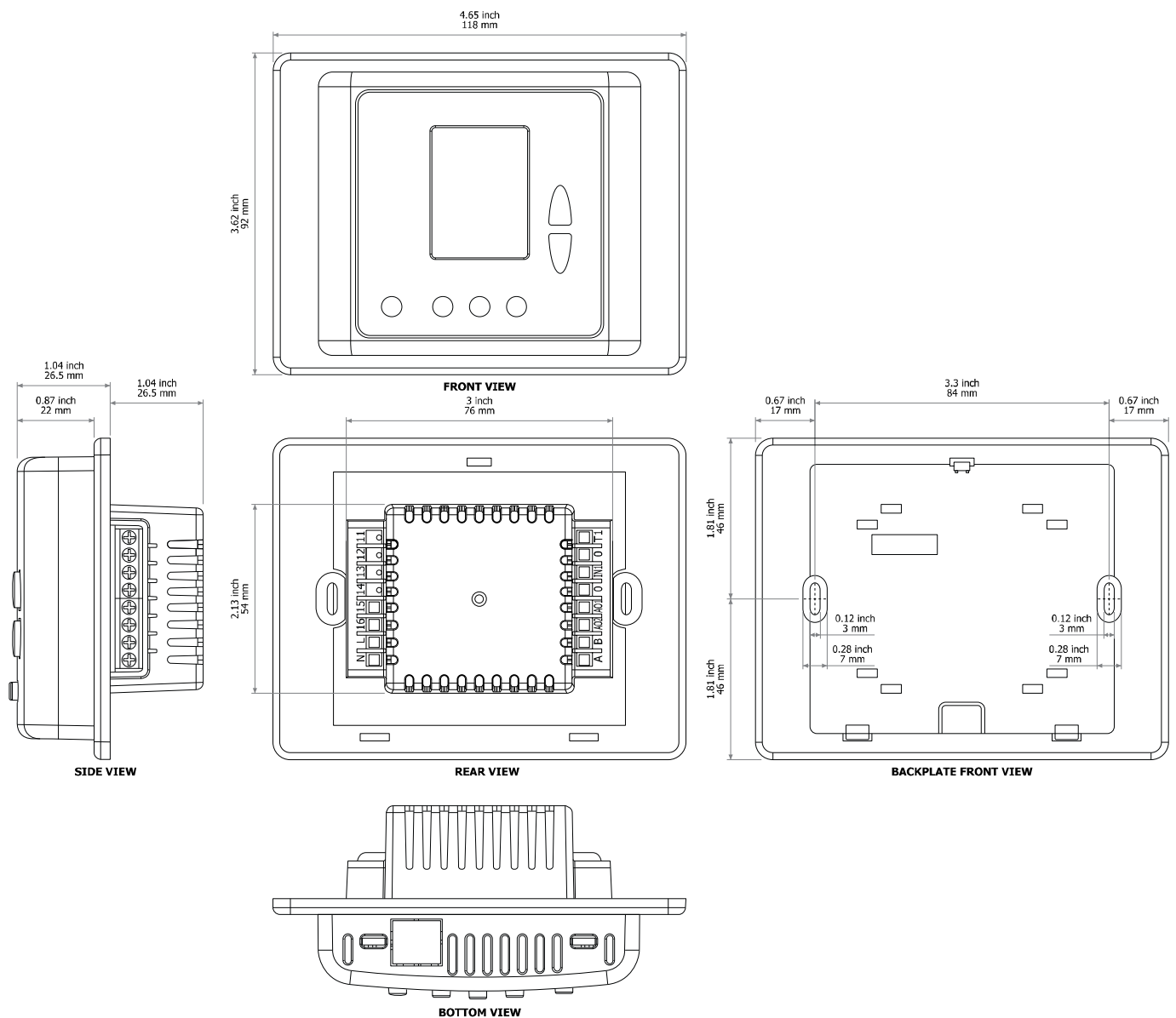
Not in use

ALT Thermostat Series | General Datasheet

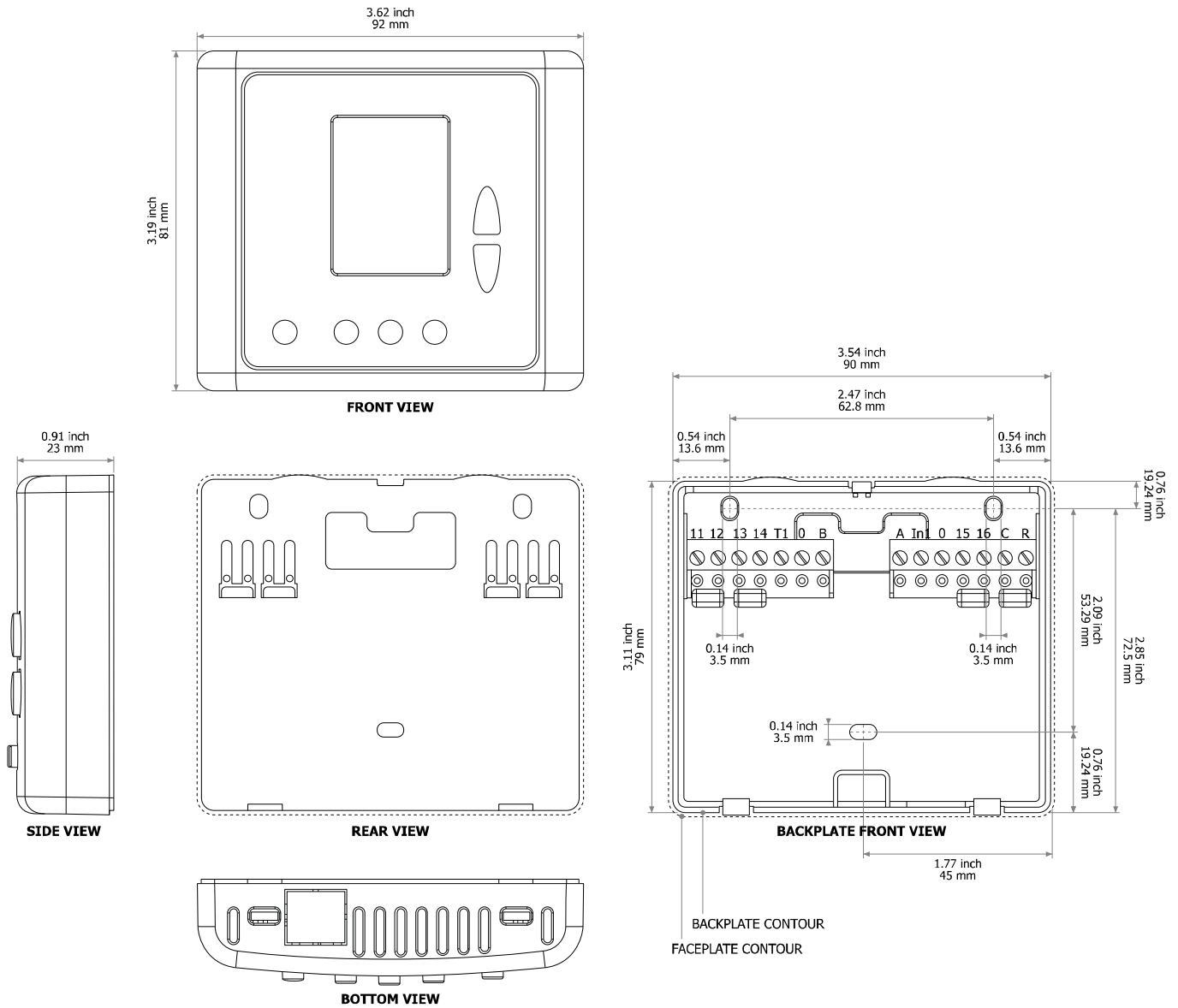
Technical specifications

- | | | | |
|------------------------------|-------------------------|------------------------|--------------------|
| ▪ Operating voltage | 110-230VAC or 24VAC | ▪ Plastic type | PC/ABS |
| ▪ Temperature readings scale | 5°C÷35°C/41°F÷95°F | ▪ Flammability | UL94V-0 |
| ▪ Temperature sensor type | NTC 50K@25°C/77°F | ▪ PIR occupancy sensor | H90°/V20°, 5m/16ft |
| ▪ Operating temperature | 0°C÷50°C / 32°F÷122°F | ▪ Humidity sensor | 5-95%RH |
| ▪ Storage temperature | -10°C÷60°C / 14°F÷140°F | | |
| ▪ Storage/operating humidity | 80%RH | | |

Dimensions ALT, 110~230VAC (Line voltage)



Dimensions ALT24, 24VAC



The performance specifications are nominal and conform to acceptable industry standards. For applications at conditions beyond these specifications, consult the local Meitav-tec office or representative. Meitav-tec shall not be liable for damages resulting from misapplication or misuse of its products.

This document is subject to change without any notice.

© Copyright 2020 Meitav-tec Ltd'. All rights reserved.